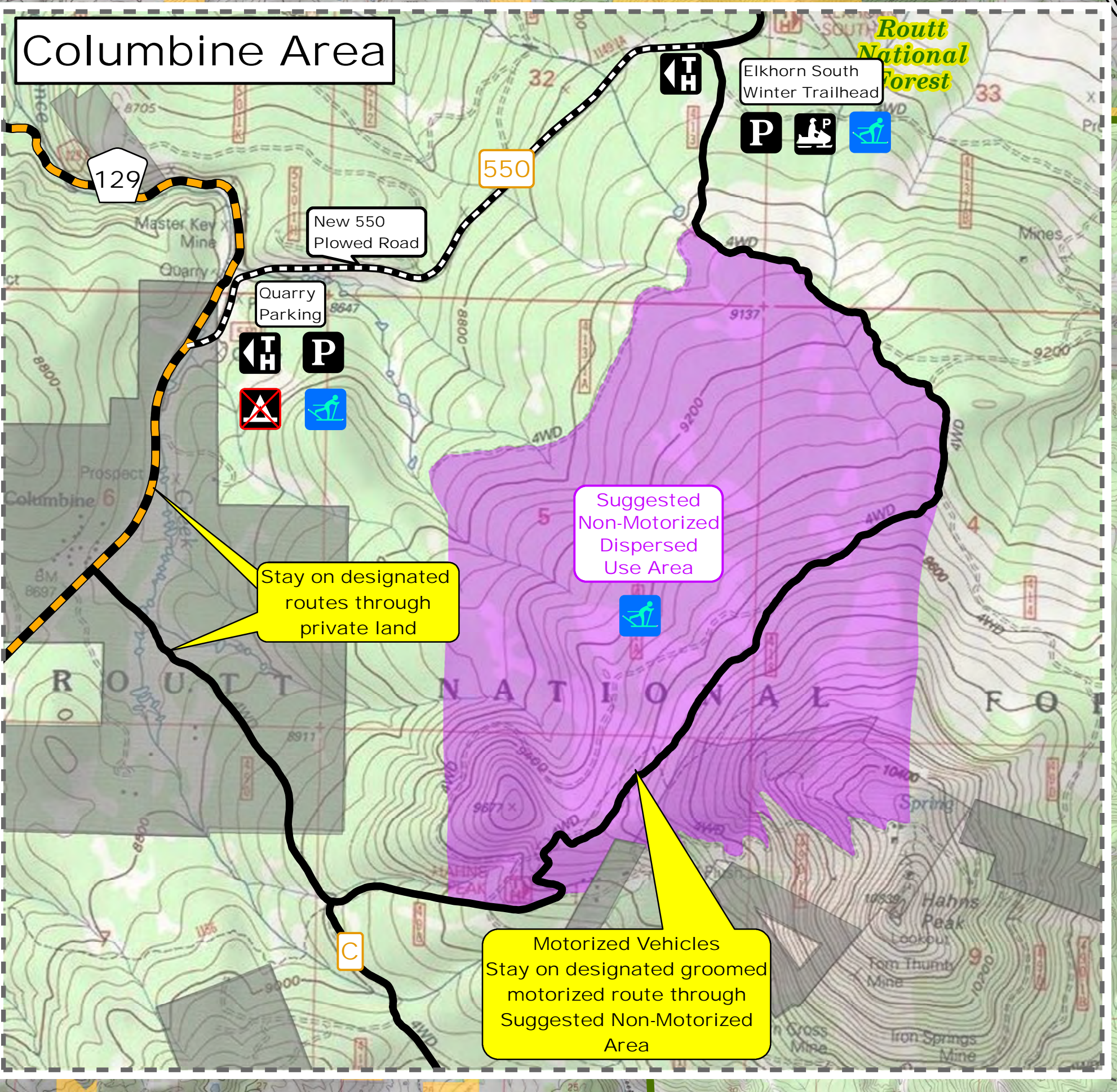
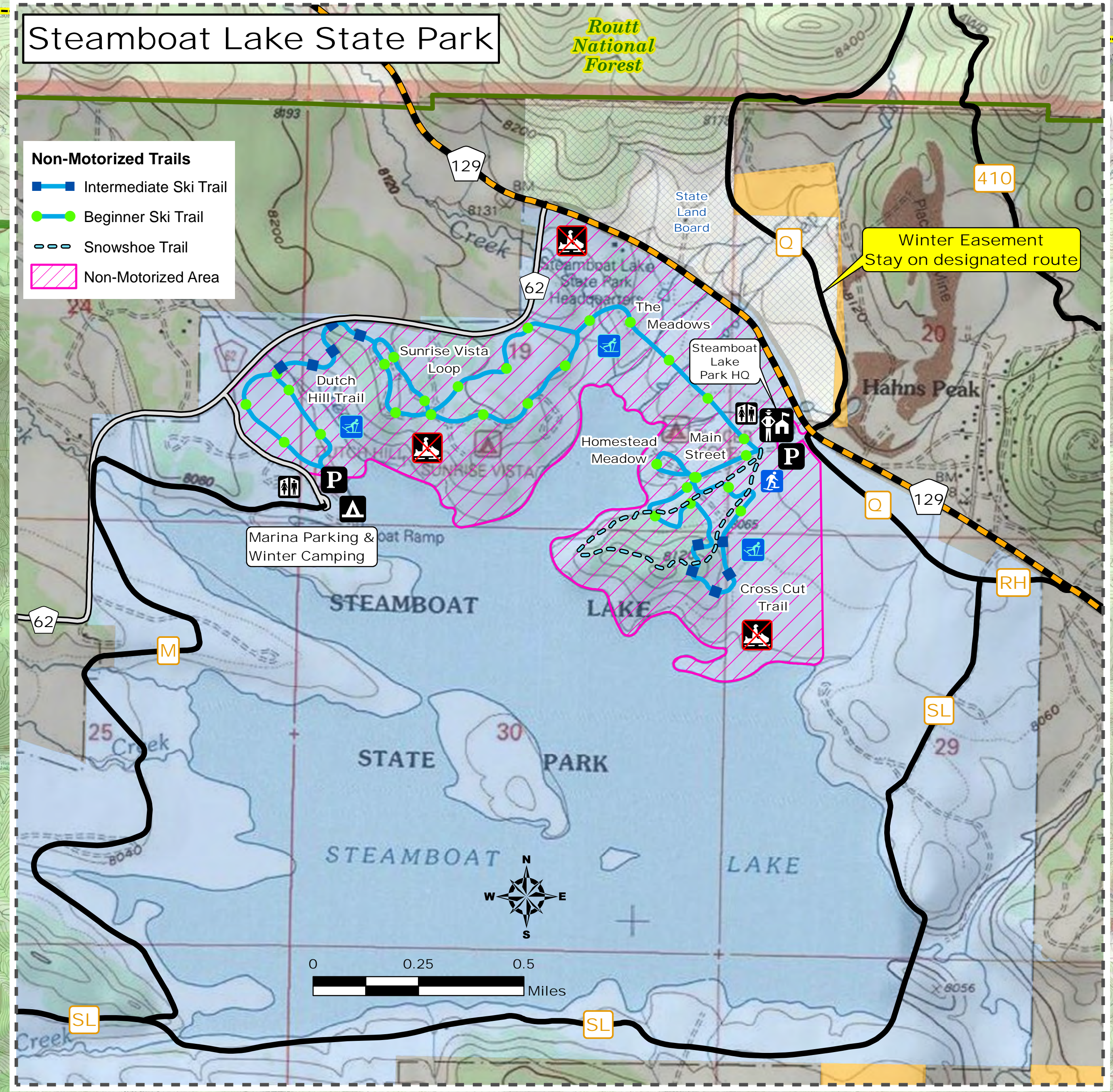
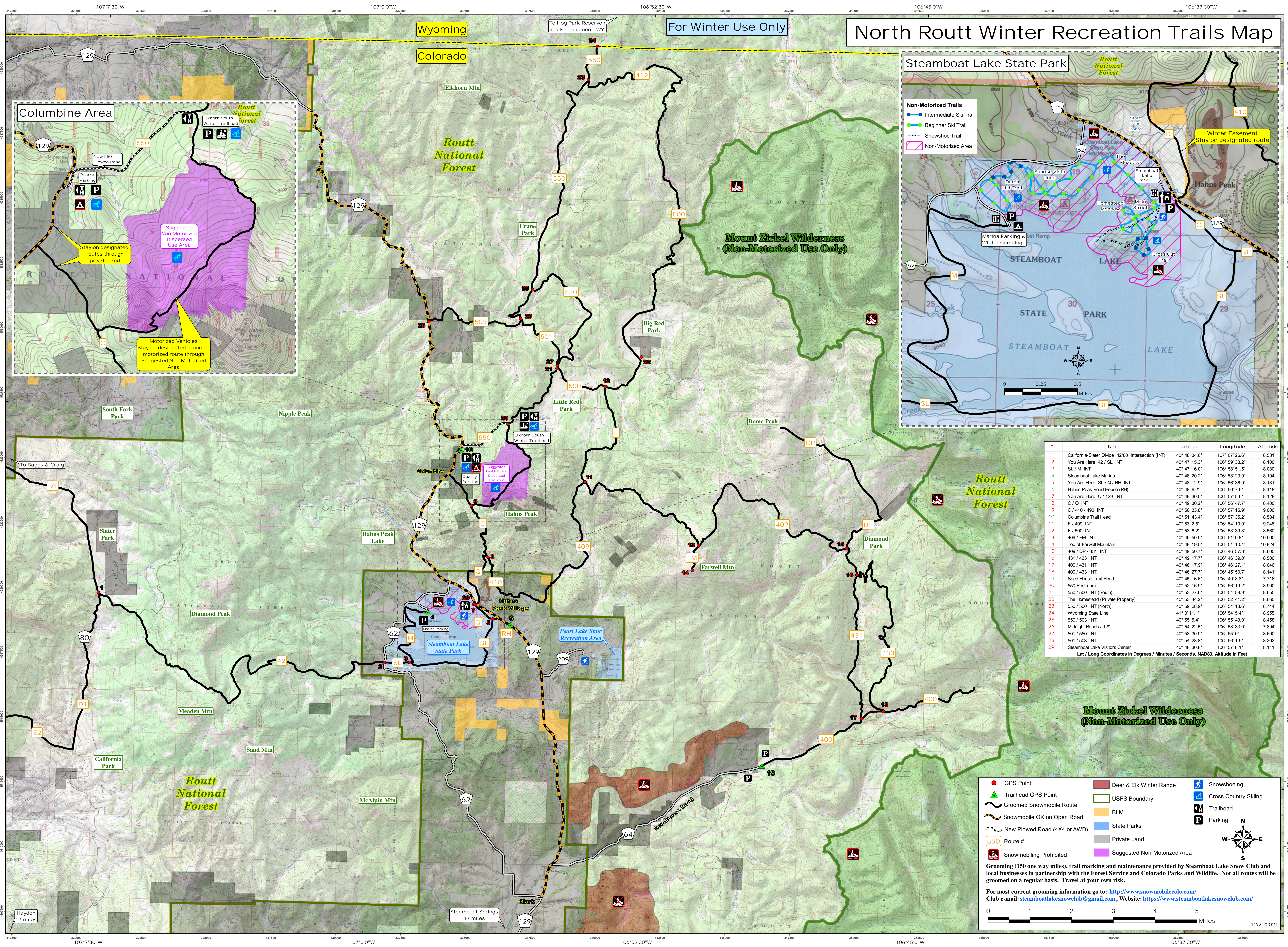


North Routt Winter Recreation Trails Map



#	Name	Latitude	Longitude	Altitude
1	California-Slater Divide 42/80 Intersection (INT)	40° 48' 34.6"	107° 07' 26.6"	8,531'
2	You Are Here 42 / SL INT	40° 47' 15.3"	106° 59' 33.2"	8,100'
3	SL / M INT	40° 47' 16.0"	106° 58' 51.5"	8,080'
4	Steamboat Lake Marina	40° 48' 20.2"	106° 58' 23.9"	8,104'
5	You Are Here SL / Q / RH INT	40° 48' 12.9"	106° 56' 36.9"	8,181'
6	Hahns Peak Road House (RH)	40° 48' 6.2"	106° 56' 7.6"	8,118'
7	You Are Here Q / 129 INT	40° 48' 30.0"	106° 57' 5.5"	8,400'
8	C / Q INT	40° 49' 30.2"	106° 56' 47.7"	8,400'
9	C / 410 / 490 INT	40° 50' 33.8"	106° 57' 15.9"	9,000'
10	Columbine Trail Head	40° 51' 43.4"	106° 57' 35.2"	8,584'
11	E / 409 INT	40° 53' 2.5"	106° 54' 10.0"	9,248'
12	E / 500 INT	40° 53' 6.2"	106° 53' 39.8"	8,560'
13	409 / FM INT	40° 49' 50.5"	106° 51' 0.8"	10,600'
14	Top of Farwell Mountain	40° 49' 19.0"	106° 51' 10.1"	10,824'
15	409 / DP / 431 INT	40° 49' 50.7"	106° 46' 57.3"	8,600'
16	431 / 433 INT	40° 49' 17.7"	106° 46' 39.0"	8,500'
17	400 / 431 INT	40° 46' 17.9"	106° 46' 27.1"	8,046'
18	400 / 433 INT	40° 46' 27.7"	106° 45' 50.7"	8,141'
19	Seed House Trail Head	40° 45' 16.6"	106° 49' 8.8"	7,716'
20	550 Reservoir	40° 52' 16.9"	106° 57' 19.2"	8,300'
21	550 / 500 INT (South)	40° 53' 27.6"	106° 54' 59.9"	8,655'
22	The Homestead (Private Property)	40° 53' 44.2"	106° 52' 41.2"	8,660'
23	550 / 500 INT (North)	40° 59' 28.9"	106° 54' 18.6"	8,744'
24	Wyoming State Line	41° 0' 11.1"	106° 54' 5.4"	8,955'
25	550 / 503 INT	40° 55' 5.4"	106° 55' 43.0"	8,458'
26	Midnight Ranch / 129	40° 54' 22.5"	106° 58' 33.0"	7,894'
27	501 / 550 INT	40° 53' 30.9"	106° 55' 0"	8,600'
28	501 / 503 INT	40° 54' 28.8"	106° 56' 1.9"	8,202'
29	Steamboat Lake Visitors Center	40° 48' 30.8"	106° 57' 8.1"	8,111'

Lat / Long Coordinates in Degrees / Minutes / Seconds, NAD83, Altitude in Feet

- GPS Point
- Trailhead GPS Point
- Deer & Elk Winter Range
- USFS Boundary
- Snowshoeing
- Groomed Snowmobile Route
- BLM
- Cross Country Skiing
- Snowmobile OK on Open Road
- State Parks
- Trailhead
- New Plowed Road (4X4 or AWD)
- Private Land
- Parking
- Route #
- Suggested Non-Motorized Area
- Snowmobiling Prohibited

Grooming (150 one way miles), trail marking and maintenance provided by Steamboat Lake Snow Club and local businesses in partnership with the Forest Service and Colorado Parks and Wildlife. Not all routes will be groomed on a regular basis. Travel at your own risk.

For most current grooming information go to: <http://www.snowmobilecolo.com/>
 Club e-mail: steamboatlakesnowclub@gmail.com, Website: <https://www.steamboatlakesnowclub.com/>

0 1 2 3 4 5 Miles